

Head and Neck cancer

Patient information leaflet

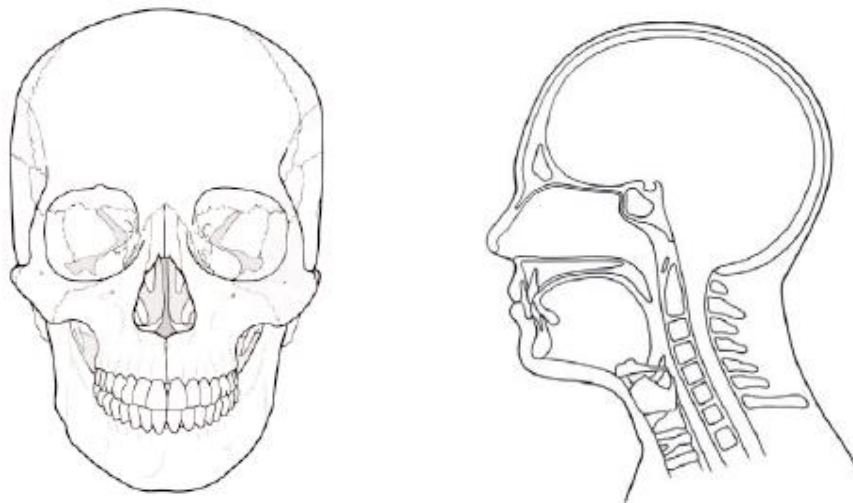
It has also been produced to provide useful information and guidance on the next steps of your journey following your diagnosis of head and neck cancer.

What is head and neck cancer?

Head and neck cancer is a malignant lesion (mass) within the head and neck area. The diagnosis will have been made following a biopsy (tissue sample) taken by your medical team.

What areas are within the head and neck area?

The head and neck area includes the mouth, nose, ears, throat and the neck. The medical team may refer to different parts within these areas when discussing your diagnosis and treatment. The following diagrams will help to illustrate the structures of the head and neck.



What are the functions of the head and neck?

The mouth

Helps to form your natural expressions. It is central to how everything works when you:

- Eat / chew
- Drink / swallow
- Speak

The nose

- Filters air breathed in via your nostrils
- Smell
-

The ear

- Hearing
- Balance

The throat

The throat contains many parts, all having a part to play in its primary functions.

- Swallow
- Speech
-

What investigations may I need to have?

Firstly, a detailed examination of your head and neck by a member of the medical team

- A full history of your symptoms and general health
- Tissue biopsy (sample taken by minor surgery)
- Fine needle aspiration
- CT scan
- MRI scan
- PET scan
- Blood tests
- Ultrasound
- Examination under anaesthetic

What are the possible treatments for oral (mouth) cancer?

- Surgery to resect (remove) the cancer
- Chemotherapy (drug treatment)
- Radiotherapy (X-ray treatment)
- Local treatment
- Or a combination of these treatments

What happens once all the tests are completed?

Once all your tests are complete, the results are discussed at a meeting called the MDT (Multi-disciplinary team) meeting, where a large team of health care professionals meet to review your tests and discuss the best treatment options for your individual case. You may not come into contact with all of them, just the ones involved in your care.

The team may include:

- Consultant Head and Neck Surgeons all qualified in cancer care.
- Specialist Nurses trained in cancer care (Key worker)
- Oncologist (specialist cancer doctors)
- Specialist Speech and Language Therapist
- Histopathologist (these are the people who analyse the tissue samples)
- Radiologists (X-ray doctors)
- Hygienist
- Dietitian
- Restorative Dentist

The meeting is held every week and you will usually be seen in clinic to discuss the findings and possible treatment plans available to you.

At this appointment you will either meet or be given the number for a clinical nurse specialist, who will act as your key worker. Your key worker is there to help guide you through your care and keep you informed about all aspects of your treatment.

A variety of information will also be available to you at this time regarding your diagnosis and treatment plan, alongside other sources of support and services available to you and your family. It helps if you bring a relative or friend to the clinic with you to listen to the information given to you at this time.

If you would like this information in another format or language contact the service.

Potřebujete-li tyto informace v jiném formátu nebo jazyce, obraťte se prosím na výše uvedené oddělení

Jeżeli są Państwo zainteresowani otrzymaniem tych informacji w innym formacie lub wersji językowej, prosimy skontaktować się z nami, korzystając z ww. danych kontaktowych

ਬ ਤੁਸੀਂ ਇਹ ਜਾਣਕਾਰੀ ਕਿਸੇ ਹੋਰ ਪ੍ਰਾਰੂਪ ਜਾਂ ਭਾਸ਼ਾ ਵਿੱਚ ਲੈਣਾ ਚਾਹੁੰਦੇ ਹੋ, ਤਾਂ ਕਿਰਪਾ ਕਰਕੇ ਉਪਰੋਕਤ ਵਿਭਾਗ ਵਿੱਚ ਸਾਡੇ ਨਾਲ ਸੰਪਰਕ ਕਰੋ।

اگر آپ کو یہ معلومات کسی اور فارمیٹ یا زبان میں درکار ہوں، تو براہ مہربانی مندرجہ بالا شعبے میں ہم سے رابطہ کریں۔

لکشب ریاعم و امة مجرتم و لامة فلة فلتخم و جريف كنم لاصتلا مسقلاب
روكذملا هلاعاً " اذ بتجتا لوصطلا و لاء هذه موملعملا

Acknowledgements:

Sheffield Teaching Hospitals NHS Foundation Trust
Sheffield's Hospital Charity